



PT. TOPLA ABADI JAYA



• • • •

# COMPANY PROFILE

# PT TOPLA ABADI JAYA

Sheet, Vacuum Forming, and Profile Extrusion

---



Management  
System  
ISO 9001:2015  
ISO 14001:2015

[www.tuv.com](http://www.tuv.com)  
ID 9105009638

NO. PATEN : IDP 000036835

# WELCOME TO OUR COMPANY

PT Topla Abadi Jaya first started its operation in Indonesia in 1994.

We are a manufacturer of plastic products that is supplying its products to home electronic appliances as well as other industrial fields domestically and internationally. Looking back over the past 10 years, we have seen that the Indonesian community and its economy have evolved dramatically. As one of the leading nations in ASEAN with the largest Muslim population in the world, Indonesia indeed has a great potential to grow in the future. PT. Topla Abadi Jaya will continue to grow steadily here in Indonesia by embracing our core management philosophy as follows.

## ABOUT US

We support our only resource for life and ensure the future prosperity of mankind.

**“Let us care for our Earth by stop wasting its limited resources”**

Based on this principle, PT. TOPLA ABADI JAYA continually creates:



To introduce ecologically friendly materials to the market



To design environmentally friendly products



To deliver only recyclable materials and products to the market

## OUR MACHINES

- Multiple Layer (90+90)mm Extruder
- Multiple Layer (115+90+65)mm Extruder
- Auto Color Dryer
- Crusher
- Color Checker
- Gloss Checker
- Pelletier
- Izod measure machine
- Continuous V-F
- Single Heater Double Forming
- Hydraulic Press 30T
- Hydraulic Press 50T
- Hydraulic Press 60T
- Hydraulic Press 80T
- Hydraulic Press 300T
- CNC Machine
- Extruder 65 mm
- Extruder 55 mm
- Extruder 50 mm
- Extruder 40 mm
- Gasket Welding
- Gasket cutting Machine
- Magnet Cutting Machine

# OUR PRODUCTS

Food Panel for Refrigerator



Back Side Refrigerator



Door Panel for Refrigerator



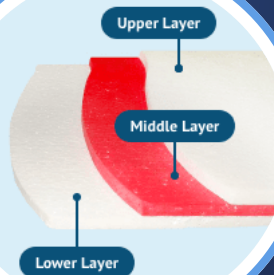
Drain Pan Cover



Roll-Sheet



3 Layers Sheet Extrusion



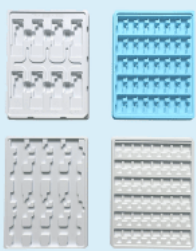
Multi Color Options



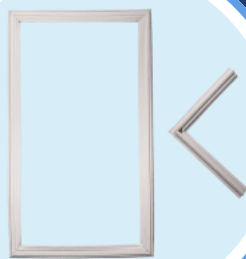
Part Tray



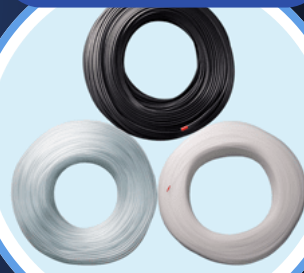
Part Tray



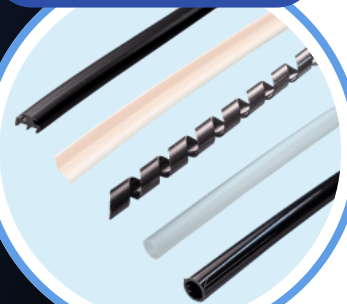
Gasket for Refrigerator



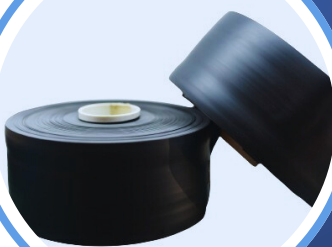
Liner, PVC Tube, PVC Hose



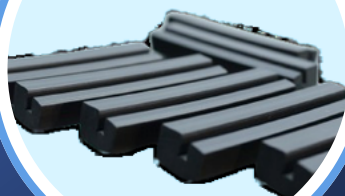
Gasket seal and Protector Tube



PVC Sheet Roll



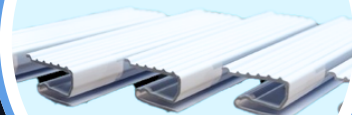
Gasket Aluminium



Setting Block



Door Evaporator



# Our Client

SHARP

Panasonic  
PEGGI

DENSO

Haier

JST



Panasonic

YKK  
ap

HI-LEX

SANKEN

STANLEY

PARAMOUNT BED

## Contact Us

### PLANT 1

Sheet and Vacuum Forming

MM 2100 Industrial Town Jl. Sulawesi III Block M 28.2-37  
Gandamekar, Cikarang Barat, Bekasi 17520 Indonesia.



### PLANT 2

Vacuum Forming and Profile Extrusion

MM 2100 Industrial Town Jl. Irian IV Block LL No.4  
Jatiwangi, Cikarang Barat, Bekasi 17520 Indonesia.



Tel.

[62-21-8980176](tel:62-21-8980176) / [62-21-8980181](tel:62-21-8980181)

Fax.

[62-21-89982264](tel:62-21-89982264) / [62-21-8980177](tel:62-21-8980177)

Email :

[info@topla.co.id](mailto:info@topla.co.id) / [bayu.ap@topla.co.id](mailto:bayu.ap@topla.co.id)

[pikonih@topla.co.id](mailto:pikonih@topla.co.id) / [andi.suhandi@topla.co.id](mailto:andi.suhandi@topla.co.id)

[www.topla.co.id](http://www.topla.co.id)

# GET IN TOUCH



SCAN HERE